

Whitepaper

Schedule Board



FEATURES

EFFECTIVE AND CLEAR

Companies can use the Schedule Board in the MAIN-TOOL maintenance software to optimize operating processes, minimize downtimes and increase employee productivity.

In an increasingly digitalized world, companies are faced with the challenge of making their operating processes more efficient, especially when it comes to the maintenance of systems and machinery. A well-designed and strategically deployed Schedule Board can play a key role in this.

This white paper provides an overview of the functionalities and benefits of our MAIN-TOOL Schedule Board in maintenance. From planning and assigning jobs to real-time tracking and updating, learn how smart use of this feature can increase efficiency and reduce costs.

Modern maintenance that takes your maintenance processes to the next level with the MAIN-TOOL Schedule Board.

Determination of the order duration

Determining the order duration gives you a precise overview of how long each order is likely to take. This enables you to manage your resources efficiently and identify bottlenecks at an early stage.

Order identification by colour deposit

To ensure a clear distinction between the different orders, we mark them with a colored background. This allows you to see at a glance which orders belong together or need to be prioritized.

Perfect overview of workdays/ weeks/months

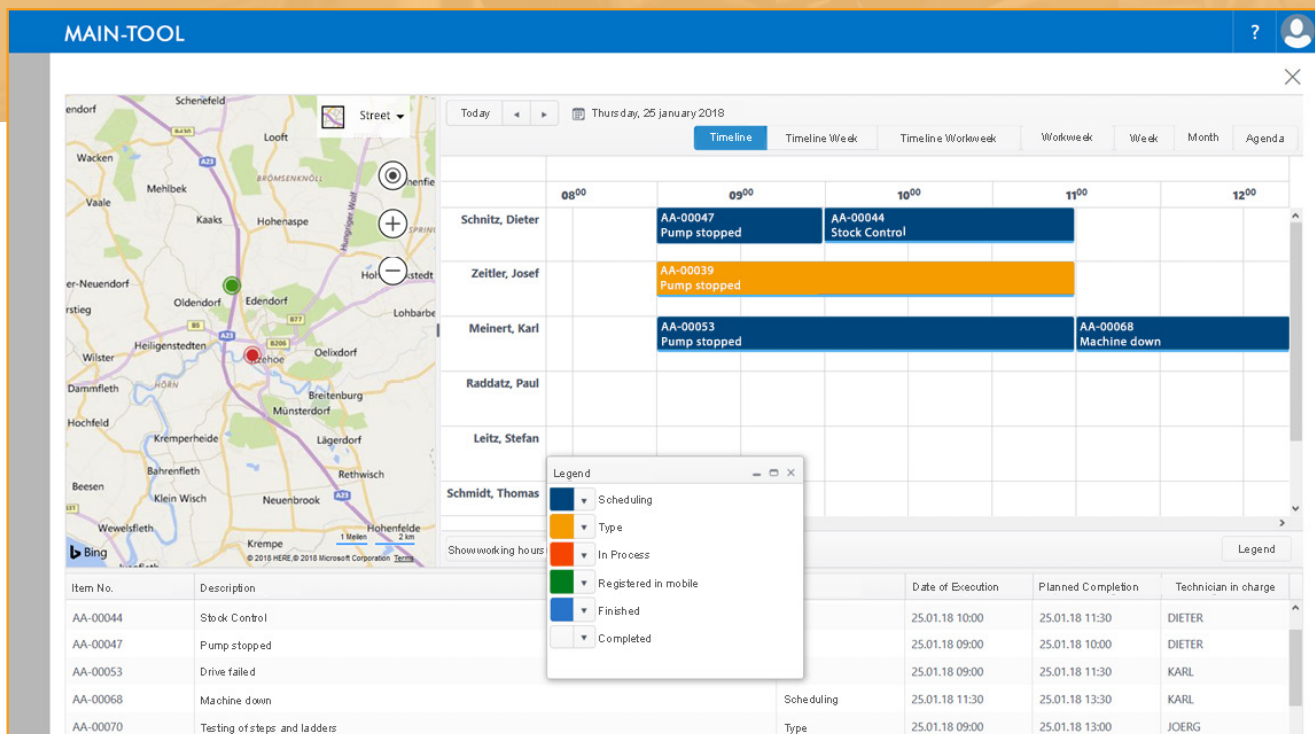
Our system gives you a perfect overview of your working days, weeks and months. You can easily navigate between different time periods and adjust your planning accordingly.

Assignment of orders with „drag & drop“

The assignment of orders is done intuitively via „drag & drop“. You can simply drag the orders to the desired times and thus create or change your work schedules quickly and easily.

FEATURES

EFFECTIVE AND CLEAR



Flexible Planning

Our solution offers you a flexible planning option that allows you to visualize work orders on a map.

Visualization of Work Orders on a map

With this function, you can easily move the work orders and thus dynamically adapt your planning.



GLI Business Solutions GmbH
Kirchhoffstraße 1
25524 Itzehoe

Phone: +49 4821 4039880

info@gli-bs.de

www.gli-bs.de

www.main-tool.de

Service and business hours:

Mo.-Do. 8.⁰⁰ - 17.⁰⁰ Uhr

Fr. 8.⁰⁰ - 17.⁰⁰ Uhr

WWW.MAIN-TOOL.DE